

# Statutory consultation launches for Morgan and Morecambe Offshore Wind Farms: Transmission Assets

Morgan and Morecambe Offshore Wind Farms: Transmission Assets

## Have your say on our proposals

**The Morgan Offshore Wind Project and the Morecambe Offshore Windfarm are two new proposed offshore wind farms being developed in the east Irish Sea.**

The two projects are collaborating to connect the offshore wind farms to the national grid via the Morgan and Morecambe Offshore Wind Farms: Transmission Assets project (referred to as "the Project"). Combined they will have the potential to generate approximately 2 gigawatts (GW) of energy – enough to power the equivalent of around two million homes.

Transmission Assets is a term that refers to the offshore and onshore infrastructure that will be used to transport electricity from the Morgan Offshore Wind Project and Morecambe Offshore Windfarm to the National Grid substation at Penwortham.

Morgan Offshore Wind Limited, a joint venture between bp and Energie Baden-Württemberg AG (EnBW), is developing the Morgan Offshore Wind Project.

Morecambe Offshore Windfarm Limited, a joint venture between Cobra and Flotation Energy Limited, is developing the Morecambe Offshore Windfarm.

Following on from our most recent non-statutory consultation, which took place earlier this year, we are now holding our statutory consultation.

The consultation will be open from **Thursday 12 October to Thursday 23 November 2023**, where we will provide you with information on our latest

proposals as well as information on the various environmental assessments we have undertaken so far.

Our statutory consultation seeks feedback on a range of information, including our Preliminary Environmental Information Report (PEIR).

The Project will comprise both permanent and temporary infrastructure including, but not limited to:

- Offshore infrastructure including offshore export cables, offshore substation platform(s), interconnector cables and a Morgan offshore booster station.
- Landfall works (where the offshore cables reach the shore) between Mean Low Water Springs and the transition joint bays including the offshore and onshore cables, intertidal working area and landfall construction compound(s), and temporary and permanent access.
- Onshore infrastructure from the transition joint bays to the electricity transmission network connection. This includes onshore export cables to the two new substations, temporary construction compounds, temporary and permanent access, and onward connections to the existing National Grid substation at Penwortham, Lancashire.
- Areas for potential biodiversity net gain, enhancement and / or mitigation, including permanent access for operation and maintenance of those areas.

Our consultation is open from **Thursday 12 October to Thursday 23 November 2023.**

You can contact the community relations team by:



**Calling:**  
0800 915 2493 (option 3)



**Email:**  
info@morecambeandmorgan.com



**Post:**  
FREEPOST MORECAMBE AND MORGAN

# The Project

Our full suite of consultation materials and information on how to take part can be found on our website [www.morecambeandmorgan.com/transmission](http://www.morecambeandmorgan.com/transmission).

As part of our consultation, we will be holding a series of public consultation events where you can meet our team, find out more about the Project and ask any questions you might have. Further information on attending consultation events can be found on the back of this newsletter.

If you have any questions regarding the consultation or information provided within this newsletter, please get in touch with a member of the community relations teams using the contact details provided on the opposite page and on the back of this newsletter.

## This consultation focuses solely on the Morgan and Morecambe Offshore Wind Farms: Transmission Assets project ("the Project").

We are therefore inviting your feedback on the Project's onshore and offshore proposals that will connect the Morgan Offshore Wind Project and the Morecambe Offshore Windfarm to the national grid.

The Project includes the following elements:

- **Landfall area**

The landfall area is where the offshore export cables come onshore, and the transitional area between the offshore cabling and the onshore cabling. The landfall area for the Project is proposed to be located between Blackpool and Lytham St Annes.

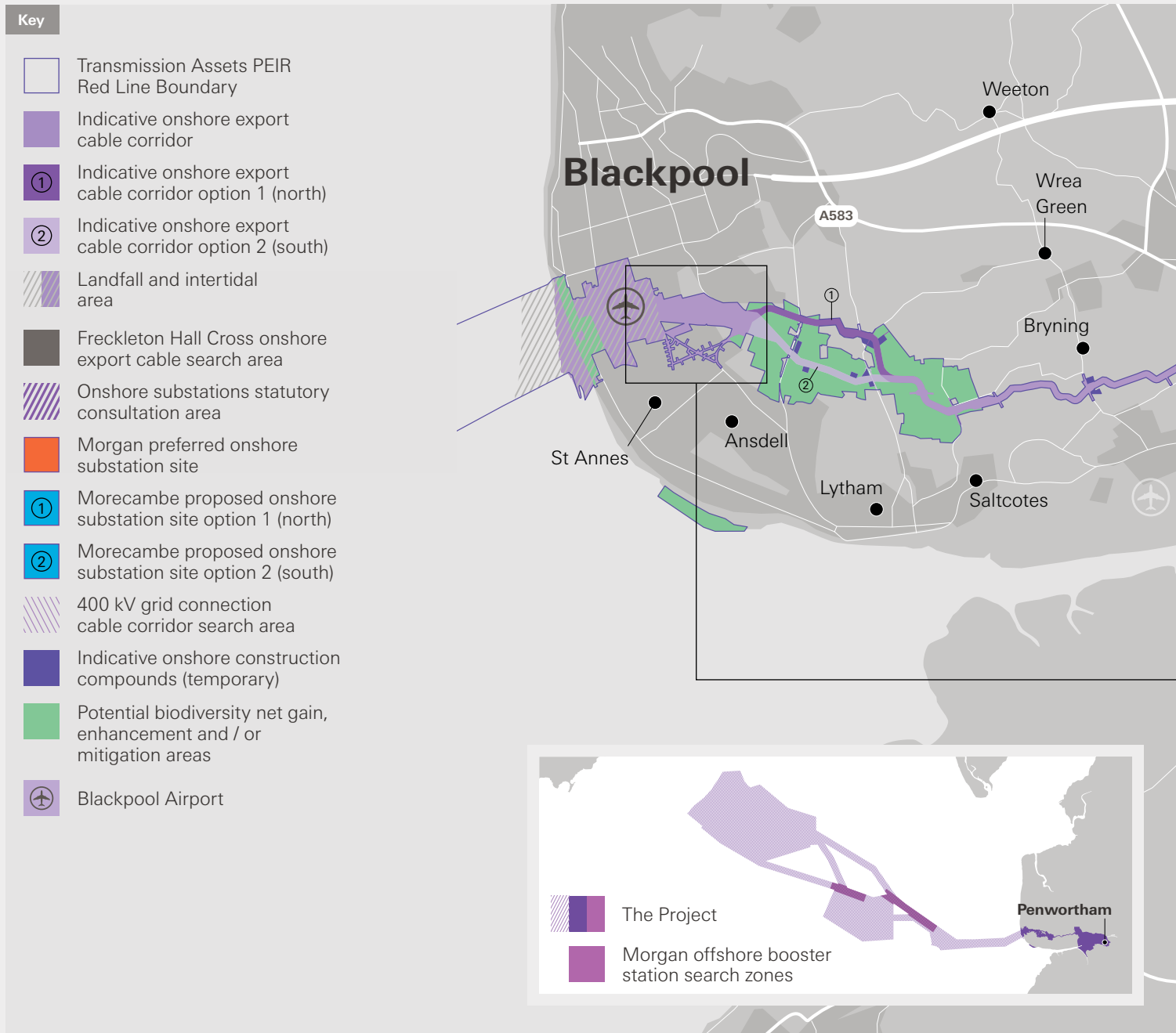
It is proposed that the offshore export cables will be connected to the onshore export cables at transition joint bays.

The cables would be installed underground using Horizontal Directional Drilling (HDD), or other trenchless methodologies.

- **Shared onshore export cable corridor**

Our onshore infrastructure will take electricity from a landfall point to the electricity transmission network.

To do this, we will need to construct underground cables within an onshore export cable corridor. Associated temporary and permanent areas will also be required to support the construction and / or operation and maintenance phases.



- **Onshore substations consultation area**

To connect to the national grid we will need to build two new onshore substations. These are located within the onshore substations consultation area, within which we expect to site all temporary and permanent areas associated with the two onshore substations.

The different generating capacities of the offshore wind farms means that a larger onshore substation is required for the Morgan Offshore Wind Project.

The constraints within the onshore substations consultation area have resulted in the identification of one potential preferred site for the Morgan Offshore Wind Project, and two potential preferred sites for the Morecambe Offshore Windfarm.

- **Offshore infrastructure**

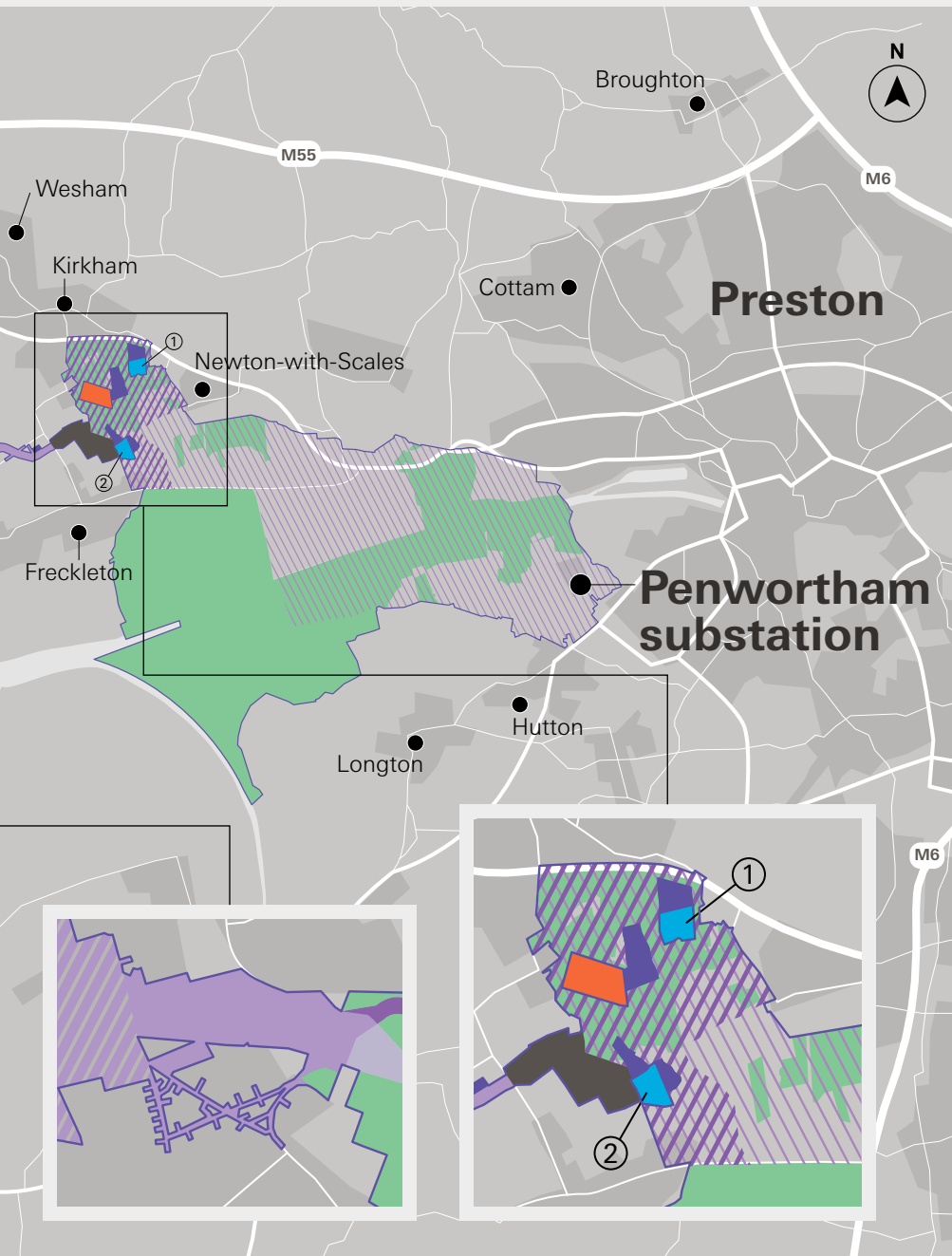
Offshore infrastructure associated with the Project includes, but is not limited to, offshore export cables, offshore substation platform(s) and one Morgan offshore booster station.

- **Areas for potential biodiversity net gain, enhancement and / or mitigation**

These include permanent access for operation and maintenance of those areas.

### What is the PEIR?

This is a suite of documents that describe in greater detail the Project and the environmental assessment work undertaken to date. The PEIR (amongst other documents) forms the basis of this consultation, and we are seeking feedback on its content. It sets out potential environmental, social and economic impacts, including any benefits of the Project, as well as any initial measures proposed to mitigate the identified potential impacts.



### Take part



**Feedback map** – available on the Project website **feedback.morecambeandmorgan.com**.

This interactive map of the proposals allows you to drop a pin and leave comments online and / or attach files (such as document or images) to your feedback.



**Feedback form** – available on the Project website **www.morecambeandmorgan.com/transmission**, at consultation events, deposit locations or by request from the community relations team.



**By email** – to **info@morecambeandmorgan.com**



**In writing** – **FREPOST MORECAMBE AND MORGAN** (please be advised it is not possible to send registered post to a freepost address).

# Share your feedback

## At the heart of every consultation are the people who live and work in the community.

We understand how important it is to gather local knowledge and we are keen to hear your views as we develop our proposals. Consulting people living near to the Project who may be affected by the proposed development is important to us and we hope you will engage with this consultation.

You can submit your feedback by filling out a feedback form at an event, deposit location or on our website ([www.morecambeandmorgan.com/transmission](http://www.morecambeandmorgan.com/transmission)), leaving comments on our interactive map or sending us your thoughts by email or post.

If you would like to meet the Project team, better understand the proposals and ask any questions you may have, please come along to one of our public consultation events which we have listed below.

### Consultation events

These are in person drop-in events, meaning you can come along at any time between the hours below. There will be printed materials on display and members of the Project team for you to talk to and find out more.



Please check [www.morecambeandmorgan.com/transmission](http://www.morecambeandmorgan.com/transmission) before attending a consultation event in case of any unforeseen changes.

Location	Date	Time
<b>Newton, Salwick &amp; Clifton Village Hall</b> , Vicarage Lane, Newton-with-Scales, PR4 3RU	Thu 26 Oct	3pm to 7pm
<b>St Annes Cricket Club</b> , Vernon Road, Lytham St Annes, FY8 2RQ	Fri 3 Nov	3pm to 7pm
<b>Fylde Rugby Club</b> , Woodlands Memorial Ground, Blackpool Road, Ansdell, Lytham St Annes, FY8 4EL	Fri 10 Nov	3pm to 7pm
<b>William Segar Hodgson Pavilion</b> , Coronation Road, Kirkham, Preston, PR4 2HE	Sat 11 Nov	10am to 1pm
<b>Douglas Borough Council</b> , Town Hall, Ridgeway Street, Douglas, Isle of Man, IM99 1AD	Thu 16 Nov	3pm to 7pm

### Online event

If you can't make it along to an in-person event or would prefer to engage with the Project online, you can attend our webinar. Our live event will be held on Zoom. You can register to attend by scanning the QR code below, or visiting [www.morecambeandmorgan.com/transmission](http://www.morecambeandmorgan.com/transmission).



This event will include a presentation by the project team and a question-and-answer session.

Once you have registered to attend, you will receive an email confirmation with information about how to join this online event.

Date	Time
Mon 6 Nov	6pm to 7pm

### Pop-up events

These are smaller-scale events in public areas with high footfall, but still a great way to meet the Project team and ask any questions you may have.



Location	Date	Time
<b>St Annes Farmers Market</b> , St Annes Road West, Lytham St Annes, FY8 1SB	Thu 2 Nov	9am to 1pm
<b>Penwortham Farmers Market</b> , behind St Teresa's Church, Queensway, Penwortham, Preston, PR1 0DS	Sat 4 Nov	9am to 1pm



[www.morecambeandmorgan.com/transmission](http://www.morecambeandmorgan.com/transmission)



[info@morecambeandmorgan.com](mailto:info@morecambeandmorgan.com)



Freepost  
**MORECAMBE AND MORGAN**



0800 915 2493 (option 3)